



Solution to Panel Metering



What you have



What you want

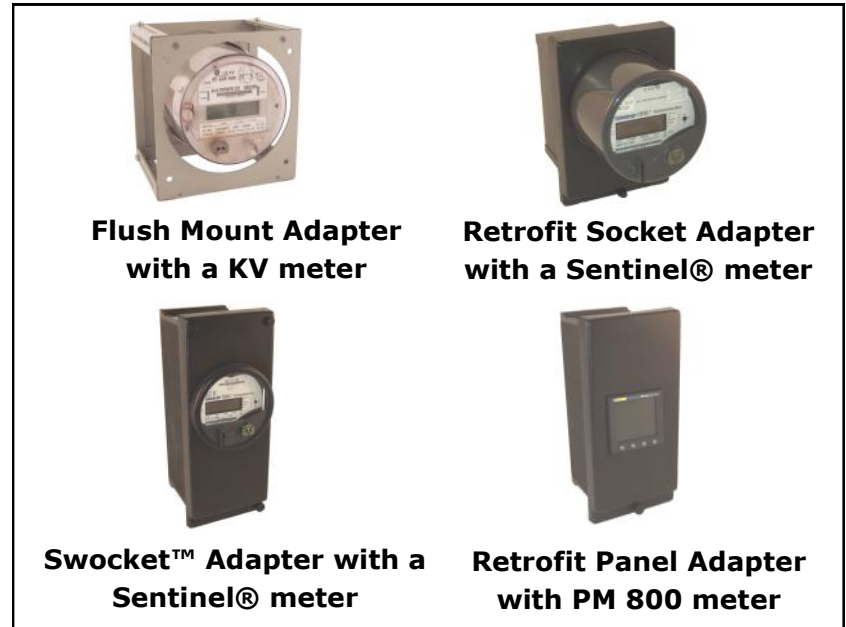


Flush & Surface Mount

Retrofit Socket Adapters

Swocket™ Adapters

Retrofit Panel Adapters



Flush Mount Adapter with a KV meter

Retrofit Socket Adapter with a Sentinel® meter

Swocket™ Adapter with a Sentinel® meter

Retrofit Panel Adapter with PM 800 meter

SUSI's Patented Adapters for Meters

What you end up with

600-1000-02-C



SUSI Adapters, Inc.

SUSI Adapter's Product Availability Chart					
Case Description	SUSI Model	Manufacturer's Model #	Standard	Narrow	Small Panel
			Socket(R)	Socket(S)	(D)
GE Small case	SW GS	GE DS-63, DS-65, DS-66, KV, Sangamo 2 element, EPM 5100	Yes	Yes	Yes
GE Small case but 1 9/16" deeper than standard case	SW GSR5	GE DS-63, DS-65 or DS-66 with electronic register (R)	Yes	Yes	Yes
GE Small case with hard wired connections	SW G53	GE DS-53, DS-55	Yes	Yes	Yes
GE Medium case	SW G43	GE DS-43	Yes	Yes	Yes
GE Medium case with cover mounting to cradle	SW G38	GE DS-38	Yes	Yes	Yes
GE Large case	SW GL	GE DS-64	Yes	Yes	Yes
GE Large case	SW GL	GE DS-67, DS-69	Yes	Yes	Yes
GE Large case but 1 9/16" deeper than standard case	SW GLR5	GE DS-64 with electronic register (R)	Yes	Yes	Yes
GE Large case with hard wired connections	SW G54	GE DS-54	Yes	Yes	Yes
GE Extra large case	SW GX	GE DS-44	Yes	Yes	Yes
GE Extra large case with cover mounting to cradle	SW G39	GE DS-39	Yes	Yes	Yes
		Note: For GE DS meters "M" means Demand meter and "W" means KYZ output			
Westinghouse Small case	SW WS	FT-21, Westinghouse (CB, D2B, D4B, D5B), Alpha, L&G, PSI...	Yes	Yes	Yes
Westinghouse Large case with switches on bottom only	SW WL	FT-31, Westinghouse (CB, D2B, D4B, D5B), Alpha, L&G, PSI...	Yes	Yes	Yes
Westinghouse Large case with switches on top & bottom	SW WM	FT-32, Westinghouse (CB, D2B, D4B, D5B), Alpha, L&G, PSI...	Yes	Yes	Yes
Basler style small case	SW TS	JEM10, JEMSTAR, Transdata	Yes	Yes	Yes
Basler style large case	SW JL	Schlumberger (Q1000, Quantum, Fulcrum, SQ400) , JEM2, Transdata	Yes	Yes	Yes
Flush Mount Adapter	SWAA	Any panel/switchboard meter including JEM1,GE DS-2 through DS-35, Sangamo ...	Yes	N/A	N/A
Surface Mount Adapter	SWBX	Any panel/switchboard meter including JEM1,GE DS-2 through DS-35, Sangamo ...	Yes	N/A	N/A
Note: After the "SW" is the type "R", "S" or "D"					
Note: At the end of the part number is the Form (4,5,6 or 9)					
Options (add the part designator to the end of the Model Number)					
KYZ Output	-K				
Test Switch Plate	-T				
Test Switch Plate & Test Switch	-TS				
Adapter Plate for large case meters (SLB, GE, L&G & Transdata)	-P				
Adapter Plate for Large switchboard meters-Westinghouse (ABB)	-A				
Cover for Flushmount Adapters	-C				
GE EPM Connector	-EPM				

Notes:

1. Not all meter manufacturers, meters types or configurations are listed above so if you don't see the meter you want to replace just contact SUSI Adapters or a representative or distributor in your area.

2. The list above recommends a SUSI part number which is based the meter manufacturer's data but when retrofitting real meters in the field, things may be different so be 100% sure before retrofitting anything.

600-1000-02-C